

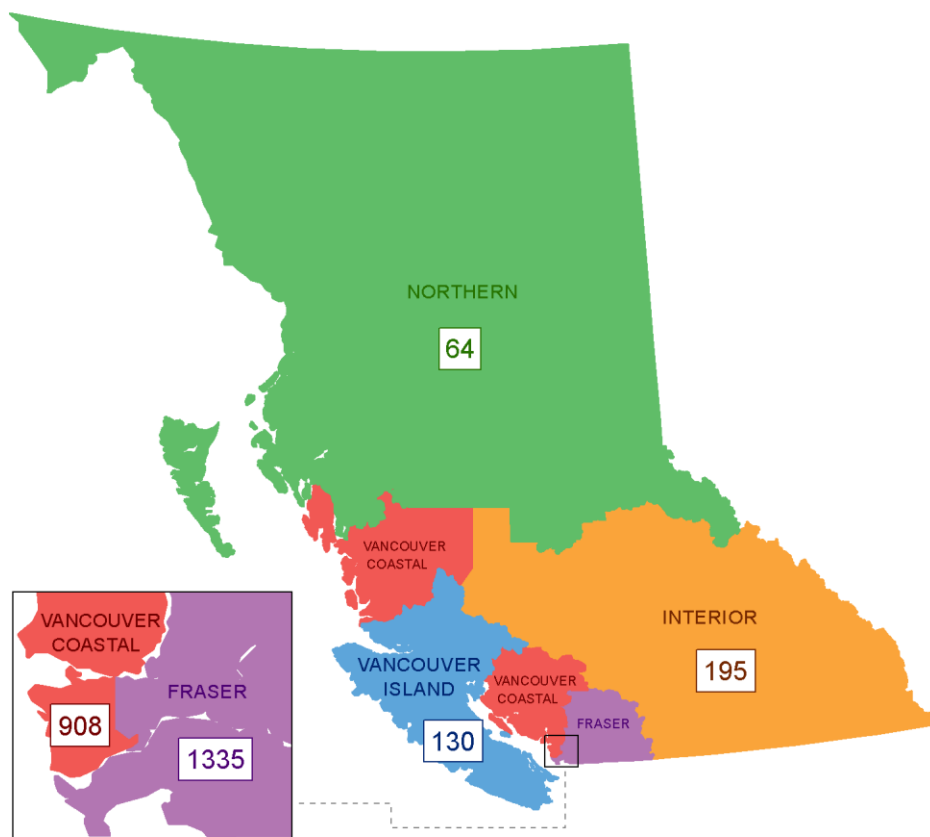
## British Columbia COVID-19 Daily Situation Report, June 5, 2020\*

### Key Findings

COVID-19 risk in BC is currently very low.

- Only one new case was reported since yesterday (Table 1, Fig 3).
- The number of reported cases, hospitalisations and deaths has been very low in recent weeks (Fig 5).
- The proportion of people who tested positive remains low (Fig 6).
- The number of reported cases among children remains low, few required hospitalization and none have died (Table 3, Fig 7).
- Adult males continue to have the highest proportion of hospitalisations and deaths (Fig 8).
- Most recently reported outbreaks have occurred in non-care facility settings (Fig 9, Table 4).
- In recent days, the number of cases in hospital and critical care have declined (Fig 10, 11).
- The BC epidemic trajectory has been favourable compared with other locations (Fig 12, 13).

**Figure 1:** Map of COVID-19 cases reported by health authority, BC, January 1 – June 5, 2020 (N=2,632)



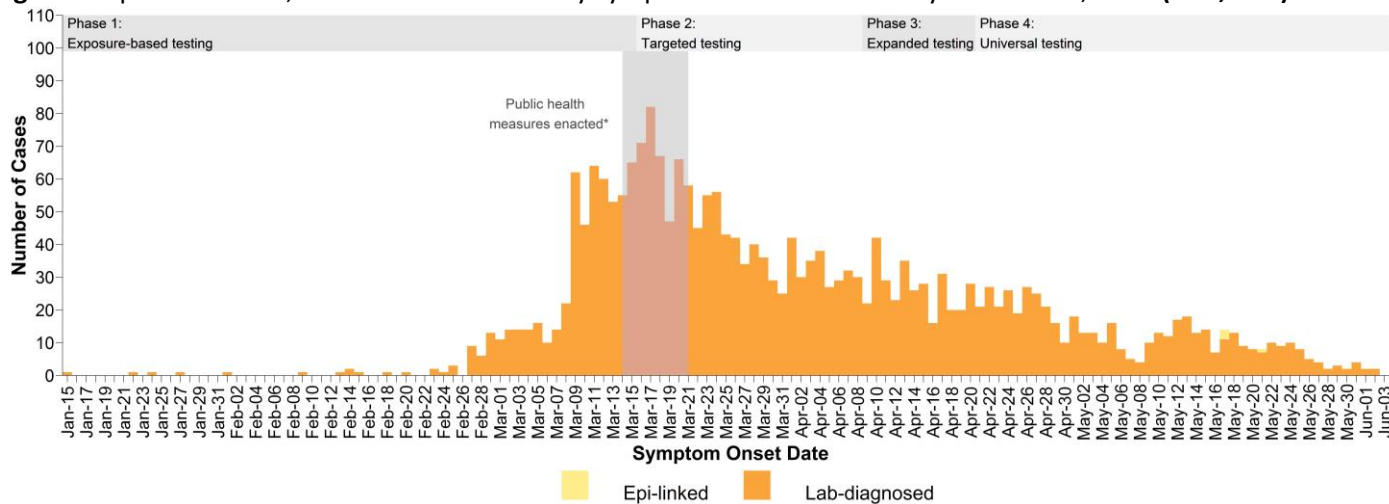
\*Findings are based on lab-confirmed, lab-probable, and epi-linked cases (case definition found here: [http://www.bccdc.ca/health-professionals/clinical-resources/case-definitions/covid-19-\(novel-coronavirus\)](http://www.bccdc.ca/health-professionals/clinical-resources/case-definitions/covid-19-(novel-coronavirus))) reported from Health Authorities to BCCDC as of 10am, except where otherwise noted. Data represent a subset of actual infections and are subject to change with changes in testing recommendations and practices, changes in case definitions, data reconciliation and/or as data become more complete.

**Table 1:** Epidemiological profile of reported cases by health authority, BC, January 1 – June 5, 2020 (N=2,632)

	Fraser	Interior	Vancouver Island	Northern	Vancouver Coastal	Total N (%) <sup>c</sup>
<b>Total number of cases<sup>a,b</sup></b>	<b>1,335</b>	<b>195</b>	<b>130</b>	<b>64</b>	<b>908<sup>j</sup></b>	<b>2,632<sup>k</sup></b>
<b>New cases since yesterday<sup>d</sup></b>	<b>1</b>	<b>0</b>	<b>0</b>	<b>0</b>	<b>0</b>	<b>1<sup>k</sup></b>
Number of lab-confirmed and lab-probable cases	1,335	195	127	64	907	2,628
Number of epi-linked probable cases <sup>b</sup>	0	0	3	0	1	4
Median age in years, cases <sup>e</sup>	50	48	50	46	55	51 years (range 0-103y)
Female sex, cases	664	91	69	38	497	1,359 (52%)
<b>Cumulative incidence per 100,000 population<sup>f</sup></b>	<b>69.6</b>	<b>24.3</b>	<b>15.3</b>	<b>21.3</b>	<b>73.2</b>	<b>51.5</b>
<b>Ever hospitalized<sup>g</sup></b>	<b>255</b>	<b>29</b>	<b>25</b>	<b>13</b>	<b>174</b>	<b>496<sup>l</sup> (19%)</b>
Median age in years, ever hospitalized <sup>e</sup>	69	62	72	47	69	68 years (range 0-98y)
Currently hospitalized <sup>g</sup>	11	0	0	0	10	21
<b>Currently in critical care<sup>h</sup></b>	<b>2</b>	<b>0</b>	<b>0</b>	<b>0</b>	<b>3</b>	<b>5</b>
<b>Total number of deaths<sup>g</sup></b>	<b>74</b>	<b>2</b>	<b>5</b>	<b>0</b>	<b>86</b>	<b>167 (6%)</b>
<b>New deaths since yesterday<sup>d</sup></b>	<b>1</b>	<b>0</b>	<b>0</b>	<b>0</b>	<b>0</b>	<b>1</b>
Median age in years, deaths <sup>e</sup>	83	73	85	NA	87	85 years (range 47-103y)
<b>Discontinued isolation<sup>i</sup></b>	<b>1,149</b>	<b>193</b>	<b>125</b>	<b>64</b>	<b>741</b>	<b>2,272 (86%)</b>

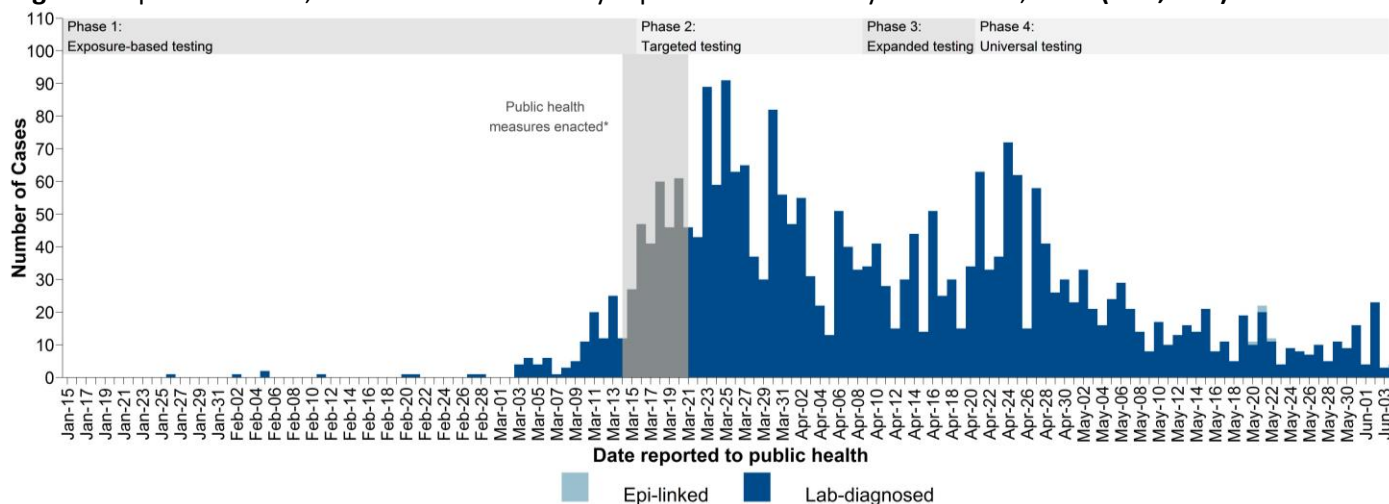
- a. Total COVID-19 cases includes lab-confirmed, lab-probable and epi-linked cases. Case definitions can be found at: [http://www.bccdc.ca/health-professionals/clinical-resources/case-definitions/covid-19-\(novel-coronavirus\)](http://www.bccdc.ca/health-professionals/clinical-resources/case-definitions/covid-19-(novel-coronavirus)).
- b. Epi-linked cases reported on or after May 19,2020 are included.
- c. Denominator for % derivation is total number of cases (N), except sex for which is calculated based on those with known information on sex.
- d. "New" cases and deaths reflect the difference in counts reported to the BCCDC between one day and the next as of 10am. This may not be equal to the number of cases/deaths by date reported to HAs, as: (1) cases/deaths reported prior to 10am would be included as new cases/deaths in the current day's count and cases reported after 10am would be included in the next day's count; and (2) there may be some delays between cases/deaths being reported to HAs and then reported to BCCDC.
- e. Median age is calculated based on those with known information on age.
- f. PEOPLE2019-2020 population estimates.
- g. Serious outcome (e.g. hospitalization, death) tallies may be incomplete or out of date (i.e. under-estimates) owing to the timing and processes for case status update.
- h. Source: PHSA June 5 @10am. The number of COVID cases in critical care units is reported daily by each Health Authority and includes the number of COVID patients in all critical care beds (e.g., intensive care units; high acuity units; and other surge critical care spaces as they become available and/or required). Work is ongoing to improve the completeness and accuracy of the data reported.
- i. Self-isolation has been discontinued per the criteria outlined in the BC guidelines for public health management of COVID-19: (1) resolution of fever without use of fever-reducing medications; AND (2) improvement of symptoms (respiratory, gastrointestinal and systemic); AND (3) either two negative nasopharyngeal swabs collected at least 24 hours apart, or at least 10 days have passed since onset of symptoms. These are the same criteria that had been used in previous reports for "recovered" cases.
- j. There is a decrease in case counts compared to yesterday. One previously reported case was removed.
- k. Although one new case was reported today, the total does not reflect a change compared to yesterday. One previously reported case has been removed due to data correction.
- l. There is a decrease in counts compared to yesterday due to data corrections.

**Figure 2: Epidemic curve, COVID-19 cases in BC by symptom onset date January 15 – June 4, 2020 (N=2,462<sup>†</sup>)**



<sup>†</sup> Only cases with symptom onset dates reported are included; cases with symptom onset date on the same day as this report are excluded as only a portion are available at the time the data are extracted.

**Figure 3: Epidemic curve, COVID-19 cases in BC by reported date January 15 – June 4, 2020 (N=2,632<sup>‡</sup>)<sup>§</sup>**



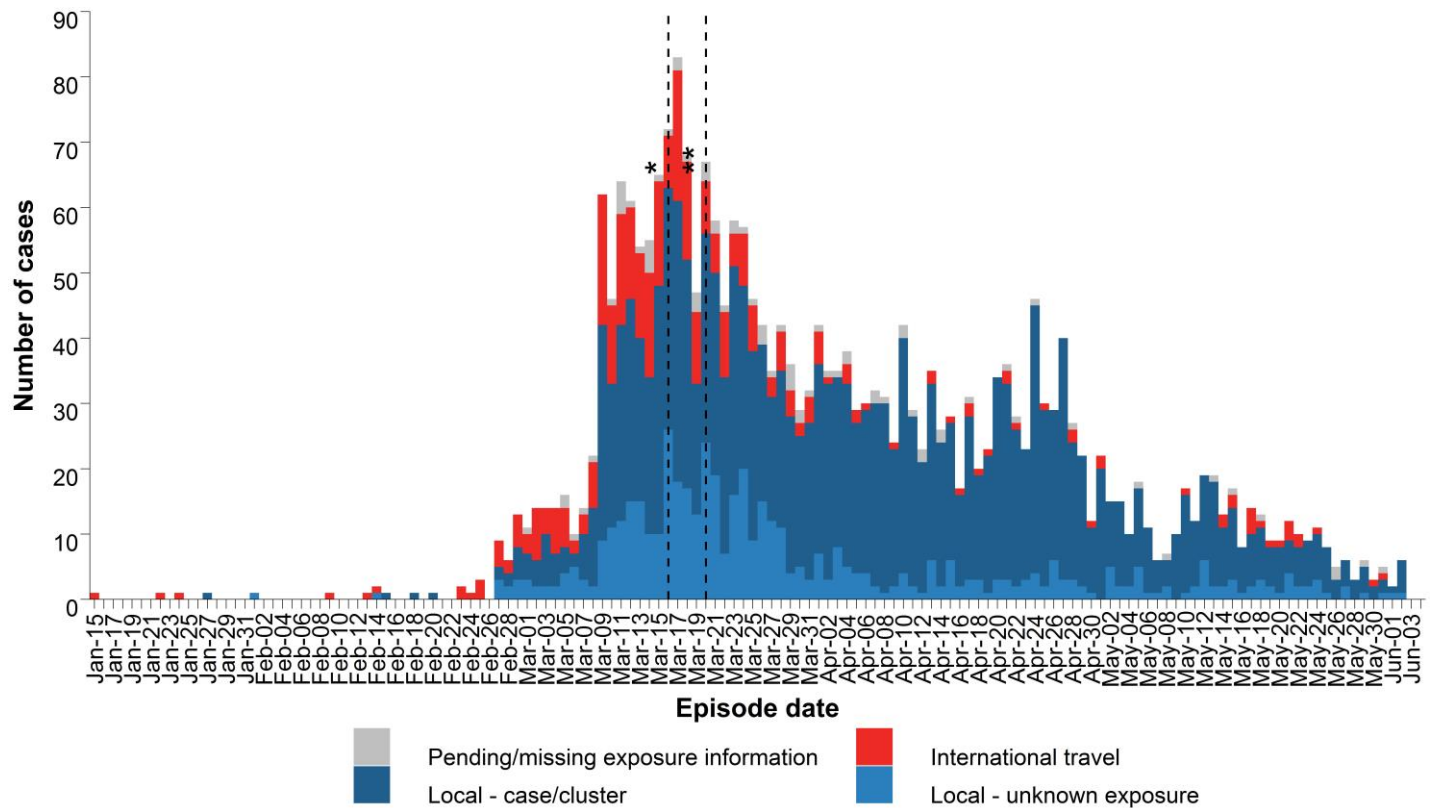
<sup>‡</sup> The number of cases reported by day differs from that in Table 1 in previous reports as this figure reflects the date the case was lab-confirmed and reported to the Health Authority.

<sup>§</sup> On June 3, a change in the FHA reporting system led to changes in the reported date of some FHA cases and concurrent changes to the epidemic curve by reported date.

A number of public health measures were enacted during the week shaded in grey. These include: March 14: Spring break started for most schools; March 16: Mass gatherings public health order implemented (>50 people), entry of foreign nationals banned, symptomatic individuals banned from flights to Canada, international flights restricted to four national airports; March 17: BC public health emergency declared, traveller self-isolation public health order implemented; March 18: Provincial state of emergency declared, food and drink service restrictions public health order implemented; March 20: US/Canada border closed to non-essential travel; March 21: closure of personal service establishments. Please refer to <http://www.bccdc.ca/health-info/diseases-conditions/covid-19/testing/phases-of-covid-19-testing-in-bc> for laboratory testing criteria changes.

**How to interpret the epidemic curves:** Figure 2 shows the date that a case’s illness started. Figure 3 shows the date the illness was confirmed and reported by the laboratory. There is a delay between the beginning of a person’s illness (symptom onset date) and the date the laboratory confirms and reports the illness (reported date). New cases only have a reported date available and appear on the right of the curve in Figure 3, but their symptom onset would have occurred prior. As information on symptom onset becomes available through public health investigation, cases are expected to appear on earlier dates in Figure 2.

**Figure 4:** Likely source of infection for COVID-19 cases in BC by episode date<sup>§</sup>, January 15 – June 4, 2020 (N=2,632)



<sup>§</sup> Episode date is based on symptom onset date (n=2,462), if not available then date COVID-19 was reported to health authority (n=170).

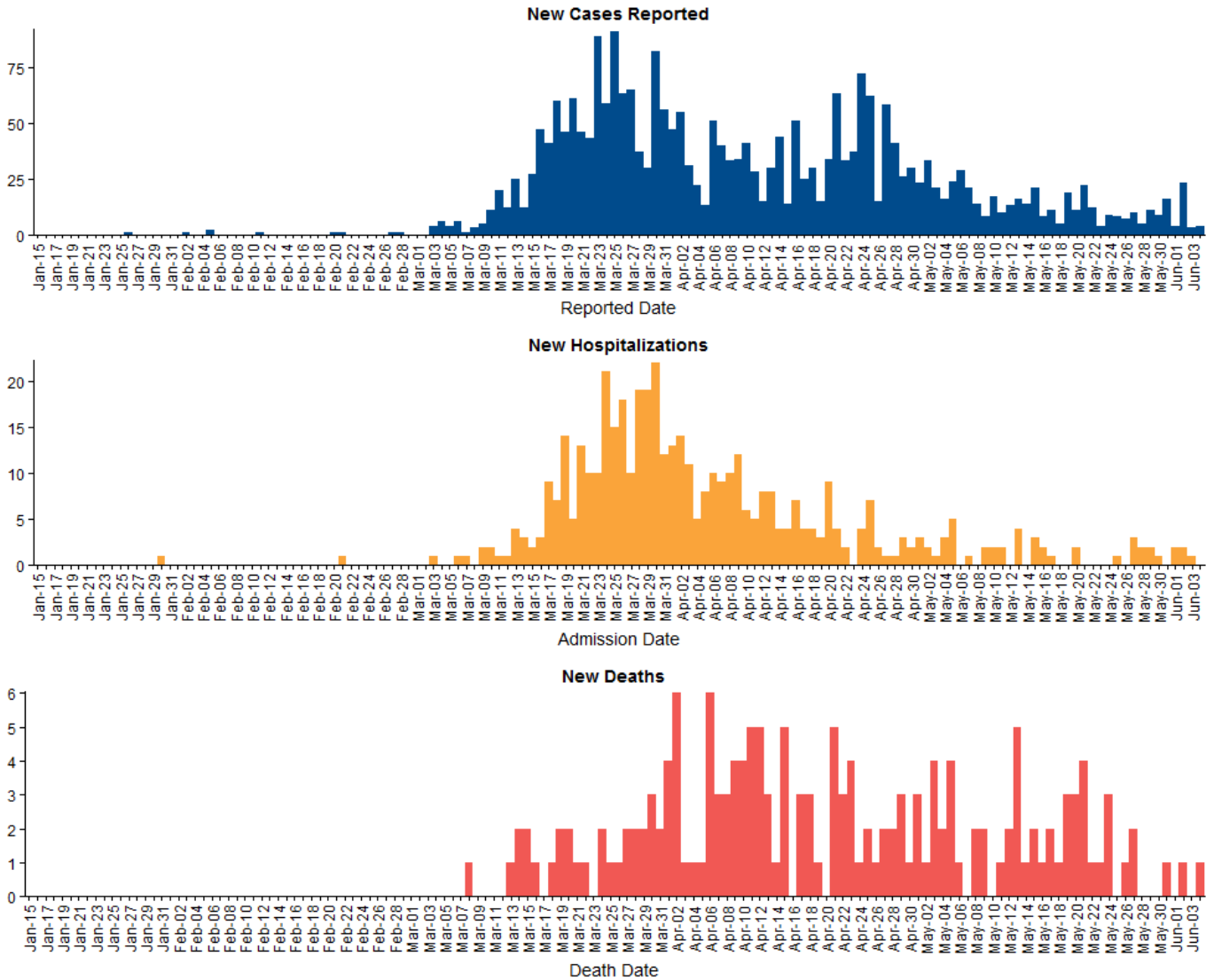
\* March 16: Entry of foreign nationals banned; symptomatic individuals banned from flights to Canada; international flights restricted to four national airports.

\*\* March 20: US/Canada border closed to non-essential travel.

**Table 2:** Number and proportion of likely source of infection for COVID-19 cases in BC, January 15 – June 4, 2020 (N=2,632)

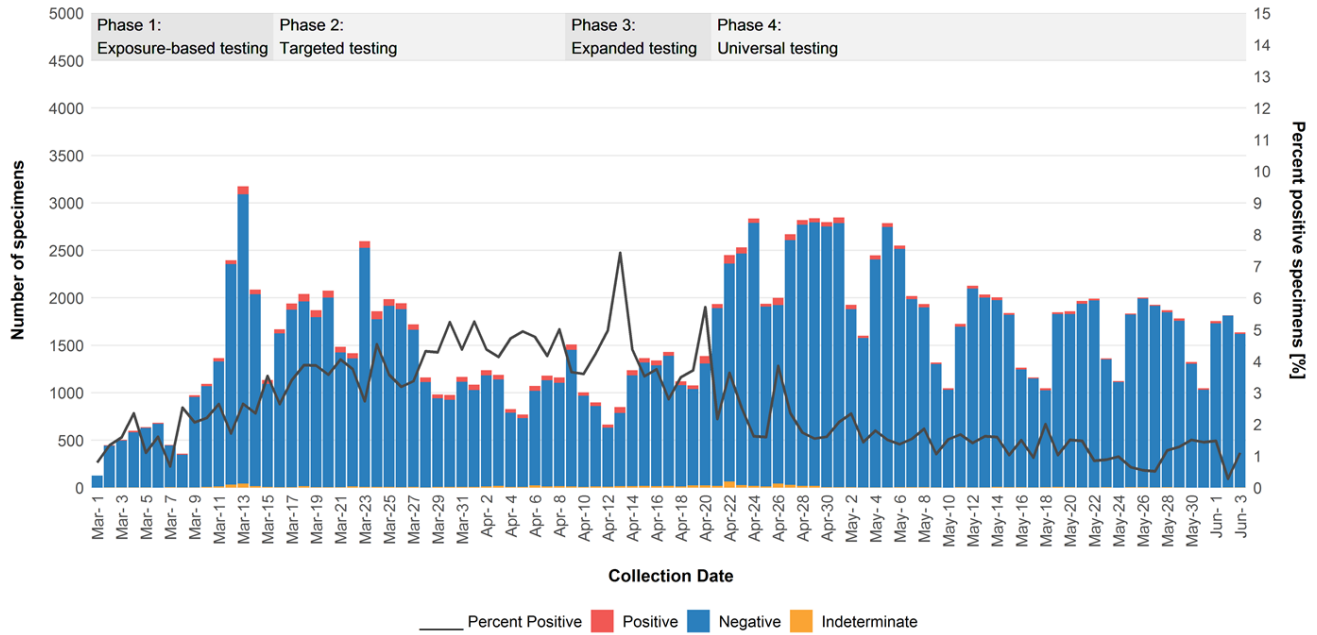
International travel n (%)	Local – case/cluster n (%)	Local – unknown source n (%)	Pending/missing info n (%)
338 (13)	1,723 (65)	493 (19)	78 (3)

**Figure 5. Number of new COVID-19 cases, hospital admissions, and deaths by event date, BC, January 15 – June 4, 2020 (N=2,632\*)**



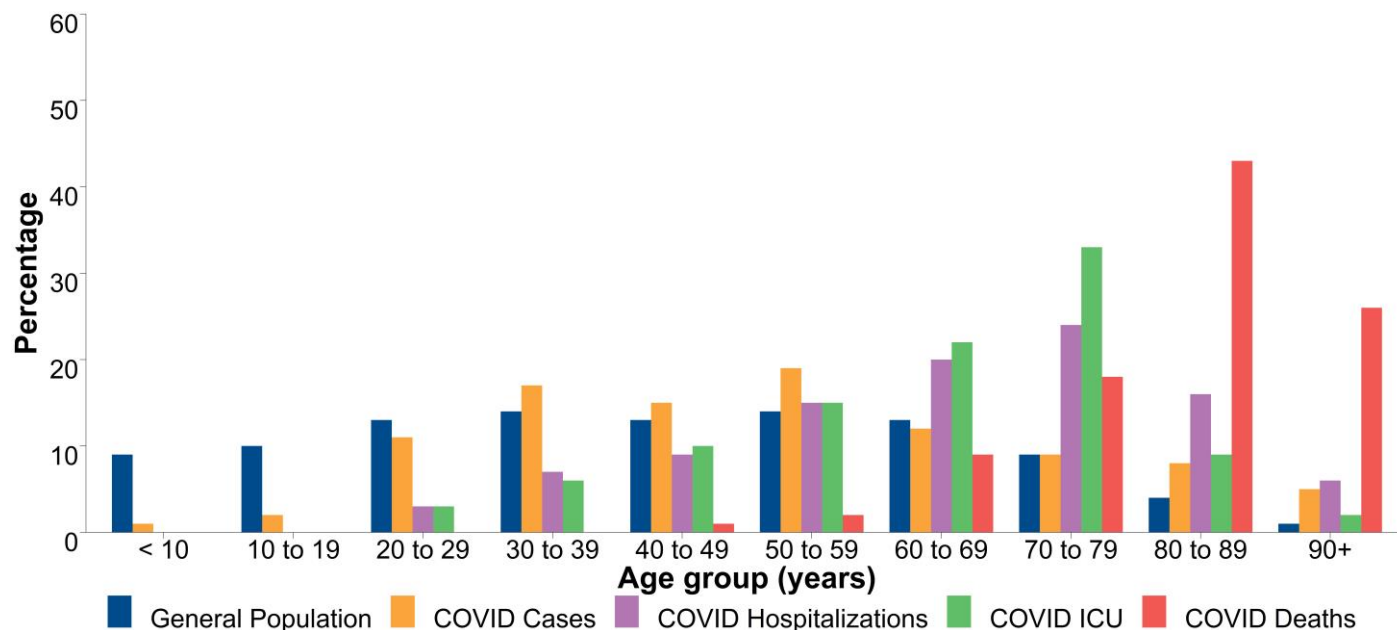
\* On June 3, a change in the FHA reporting system led to changes in the reported date of some FHA cases and concurrent changes to the epidemic curve by reported date. New hospitalizations only includes hospitalized cases with valid admission dates.

**Figure 6: Number and proportion of SARS-CoV-2 positive respiratory specimens, BC, March 1 – June 3, 2020 (N=150,829 Positive=2.44%)**



Data source: PLOVER extract on June 5, 2020. Methods and caveats: SARS-CoV-2 specimens are tallied at the specimen level by date the specimen was collected. The proportion positive on a given date may include new positive cases and retested positive cases; this may over-estimate proportionate positivity. Similarly, individuals may be tested repeatedly after becoming negative; this may under-estimate proportionate positivity. Refer to <http://www.bccdc.ca/health-info/diseases-conditions/covid-19/testing/phases-of-covid-19-testing-in-bc> for description of laboratory testing phases.

**Figure 7:** Percentage distribution of COVID-19 cases, hospitalization, ICU admissions and deaths by age, compared to the general population<sup>†</sup> of BC, January 1 – June 5, 2020 (N=2,631\*)



\*Only cases with age information available are included.

† PEOPLE2019-2020 population estimates

Note: COVID hospitalizations have been reported in the <10y and 10-19y age groups but represent <1% of hospitalizations and are therefore not visible.

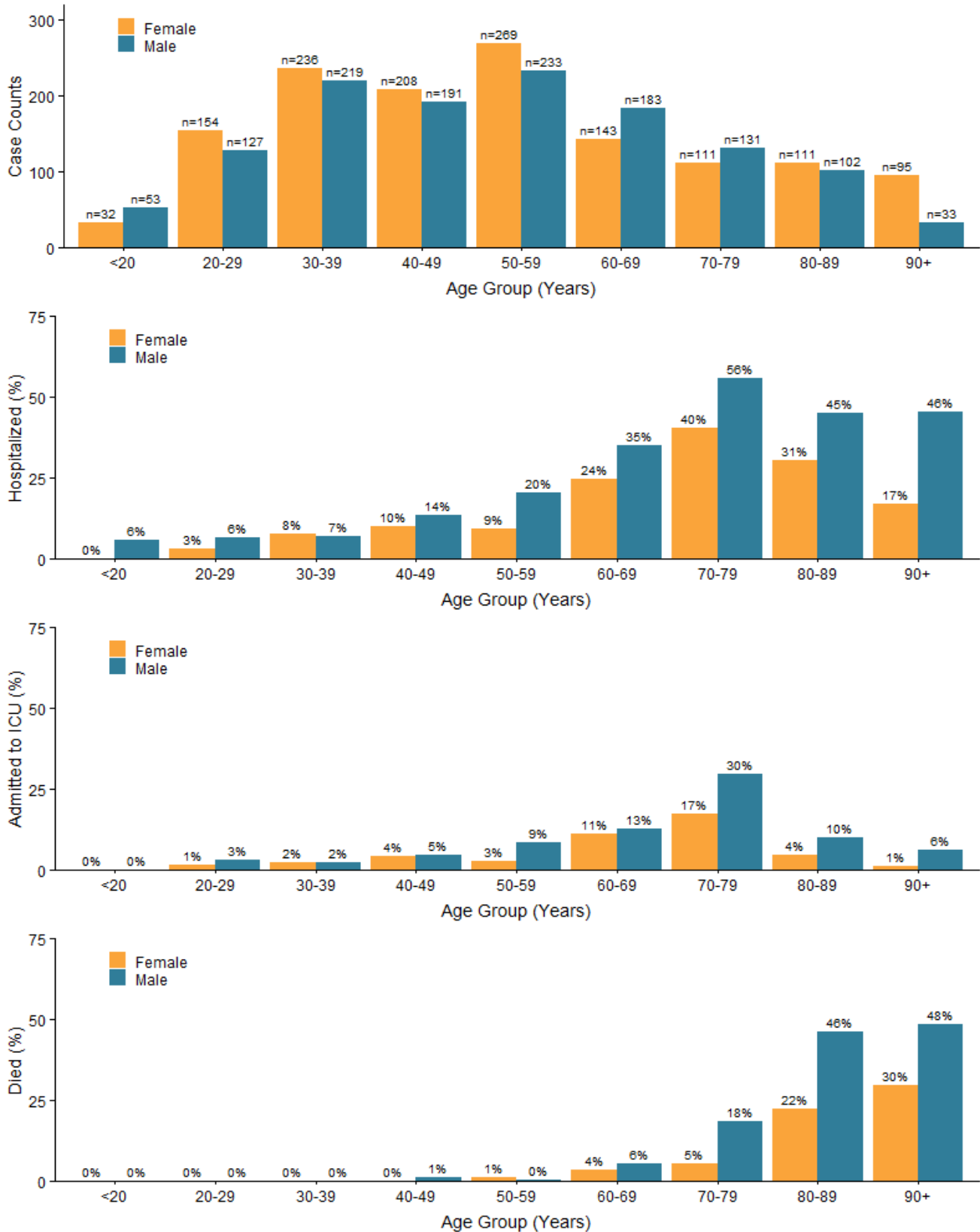
**Table 3:** Number and percentage distribution of COVID-19 cases, hospitalization, ICU admissions and deaths by age, compared to the general population of BC, January 1 – June 5, 2020 (N=2,631\*)

Age groups	COVID cases n (%)	Cases ever hospitalized n (%)	Cases ever in ICU n (%)	COVID deaths n (%)	General population <sup>†</sup> n (%)
<10 Years	32 (1)	2 (<1)	0 (0)	0 (0)	468,280 (9)
10-19 Years	53 (2)	1 (<1)	0 (0)	0 (0)	507,197 (10)
20-29 Years	281 (11)	13 (3)	6 (3)	0 (0)	684,681 (13)
30-39 Years	455 (17)	33 (7)	10 (6)	0 (0)	730,523 (14)
40-49 Years	399 (15)	47 (9)	18 (10)	2 (1)	647,790 (13)
50-59 Years	502 (19)	72 (15)	27 (15)	4 (2)	721,355 (14)
60-69 Years	326 (12)	99 (20)	39 (22)	15 (9)	675,632 (13)
70-79 Years	242 (9)	118 (24)	58 (33)	30 (18)	436,179 (9)
80-89 Years	213 (8)	80 (16)	15 (9)	72 (43)	188,010 (4)
90+ Years	128 (5)	31 (6)	3 (2)	44 (26)	50,876 (1)
<b>Total</b>	<b>2,631</b>	<b>496</b>	<b>176</b>	<b>167</b>	<b>5,110,523</b>

\*Only cases with age information available are included.

† PEOPLE2019-2020 population estimates

**Figure 8:** Counts of COVID-19 cases and proportions ever hospitalized, ever admitted to ICU, and with outcome of death by gender and age group, BC, January 1 – June 5, 2020 (N=2,631\*)



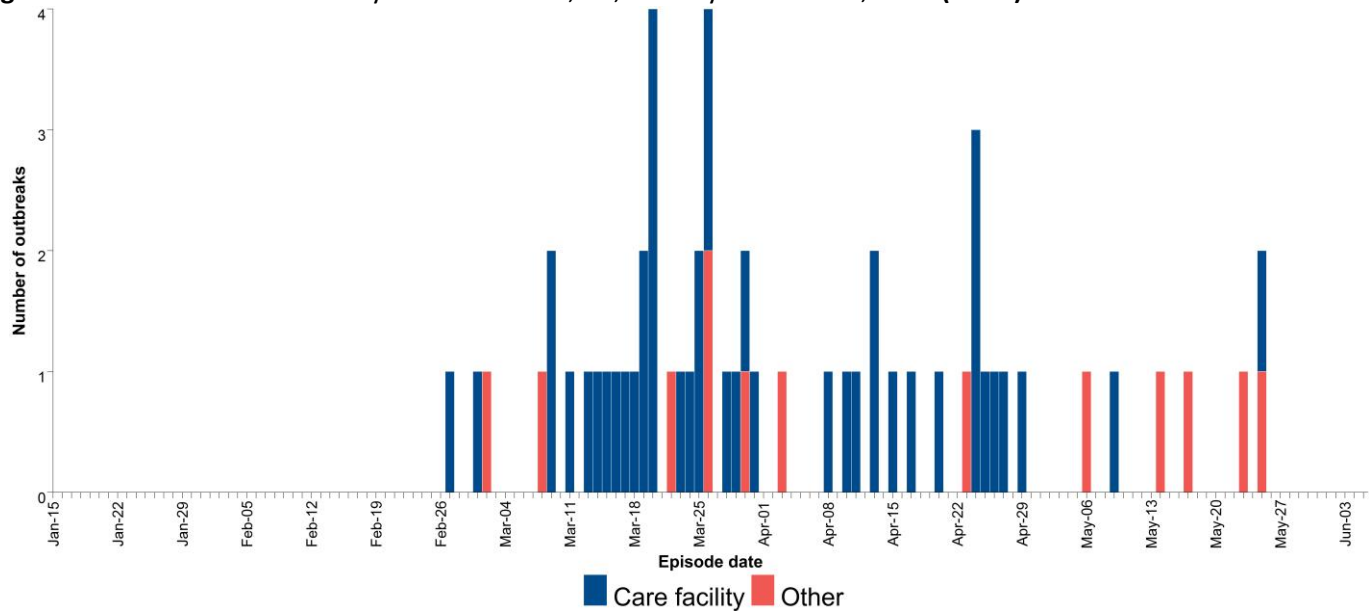
\* Includes cases with gender and age information available.

Note: Proportions calculated using the total number of cases in each gender and age group (displayed in top figure) as the denominator.

Version: June 5, 2020



**Figure 9: COVID-19 outbreaks\* by earliest date\*\*, BC, January 15 – June 5, 2020 (N=57)**



\* Care facility (acute/longterm care/independent living) outbreaks have at least one lab-confirmed COVID-19 staff or resident. Other outbreaks have two or more lab-confirmed COVID-19 cases diagnosed within a 14-day period in closed or common settings (e.g. penitentiary, shared living or work setting).

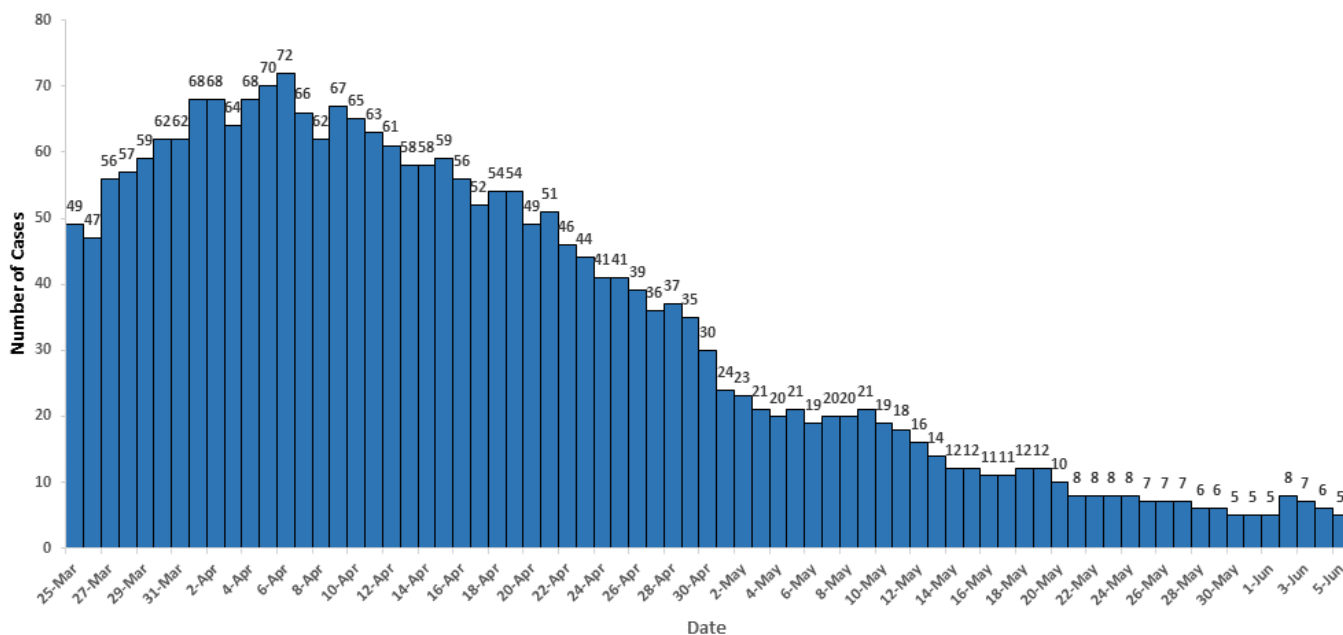
\*\* Based on the earliest date available for the first case in the outbreak (symptom onset date or, if not available, reported date). Earliest dates are subject to change as data are updated.

**Table 4: Outbreak and case counts of reported COVID-19 reported outbreaks\*, BC, January 15 – June 5, 2020 (N=57)**

	Care facility	Other settings	Total
<b>Outbreaks</b>			
<b>Total outbreaks</b>	<b>44</b>	<b>13</b>	<b>57</b>
New since last report	0	0	0
Active outbreaks	5	8	13
Outbreaks declared over	39	5	44
<b>Outbreak cases</b>			
<b>Total cases</b>	<b>557</b>	<b>396</b>	<b>953</b>
Residents/patients	340	122	462
Staff/other	217	274	491
<b>Total deaths</b>	<b>115</b>	<b>2</b>	<b>117</b>
Residents/patients	115	1	116
Staff/other	0	1	1

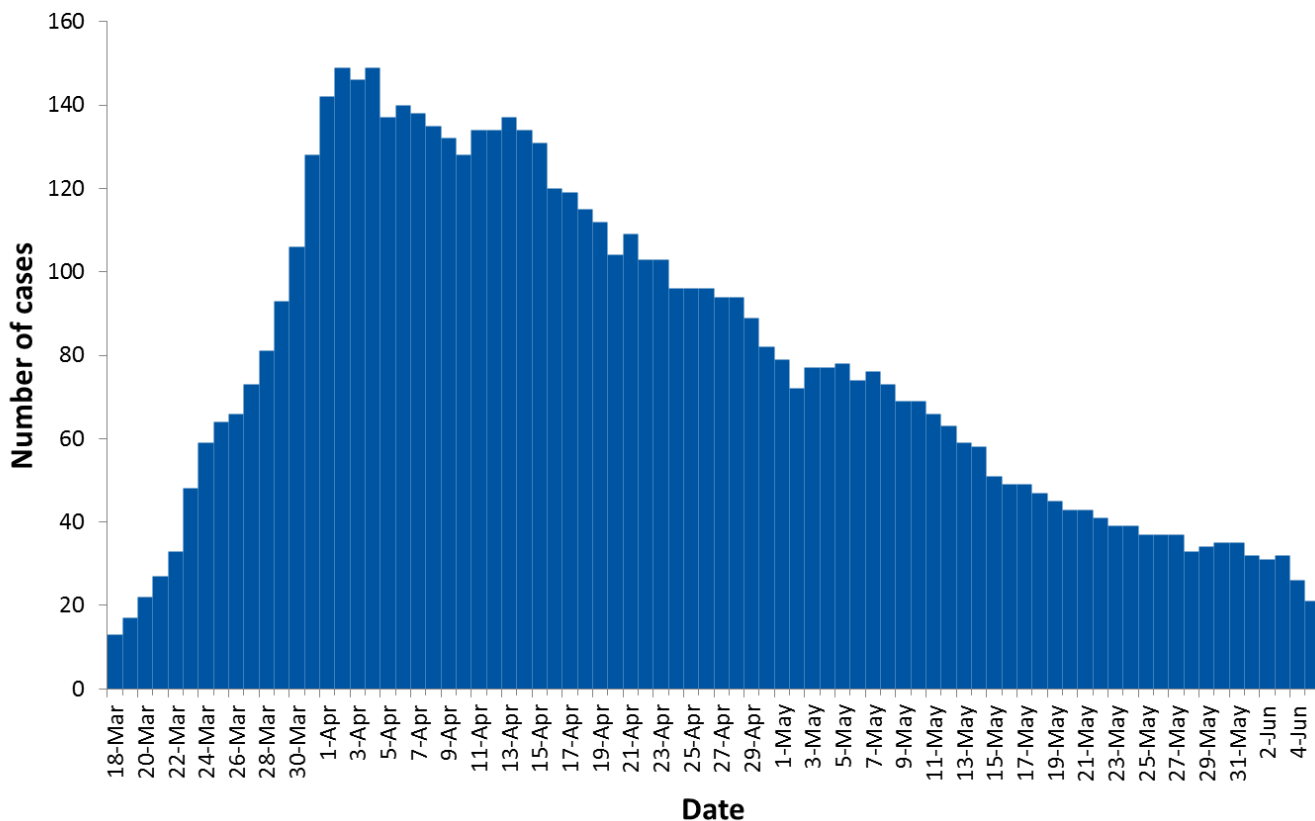
\* Care facility (acute/longterm care/independent living) outbreaks have at least one lab-confirmed COVID-19 staff or resident. Other outbreaks have two or more lab-confirmed COVID-19 cases diagnosed within a 14-day period in closed or common settings (e.g. penitentiary, shared living or work setting).

**Figure 10:** Total positive COVID-19 cases in critical care by day, BC, March 25 - June 5, 2020



Data source: PHSA June 5. Note: critical care data may change over time due to small adjustments and improvements in data quality.

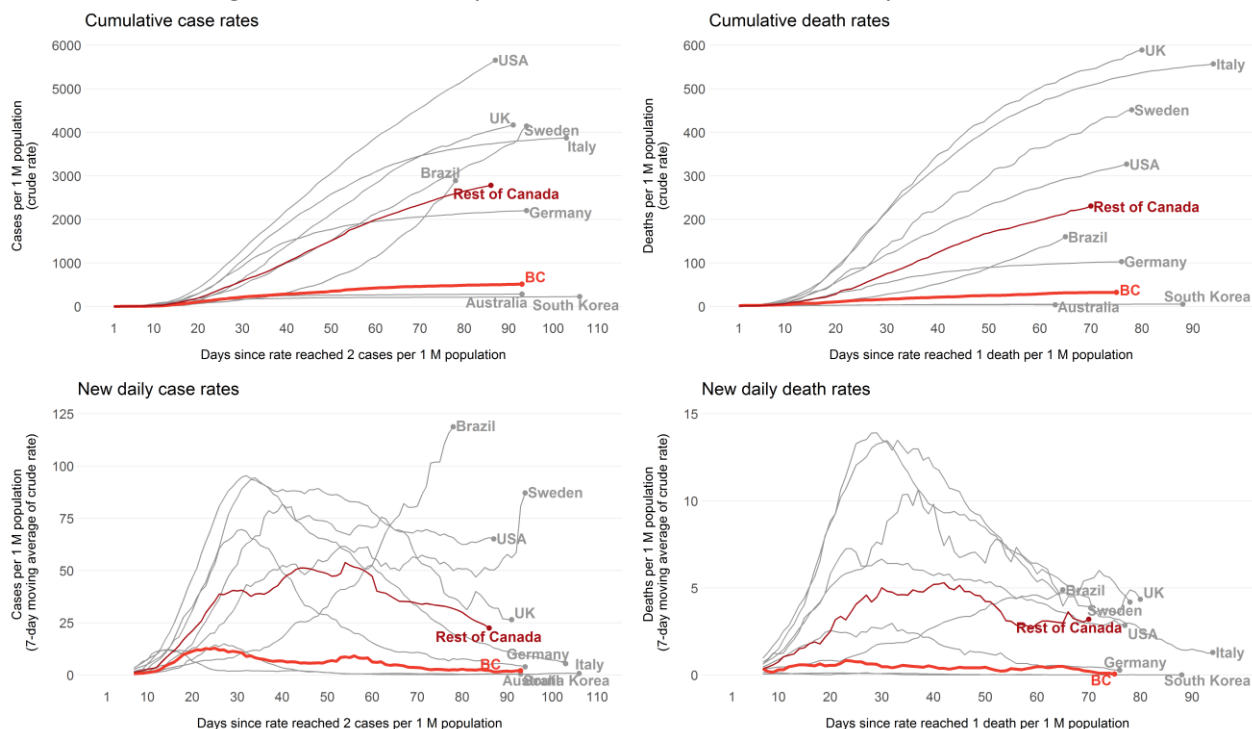
**Figure 11:** Number of COVID-19 cases in hospital by day, BC, March 18 - June 5, 2020



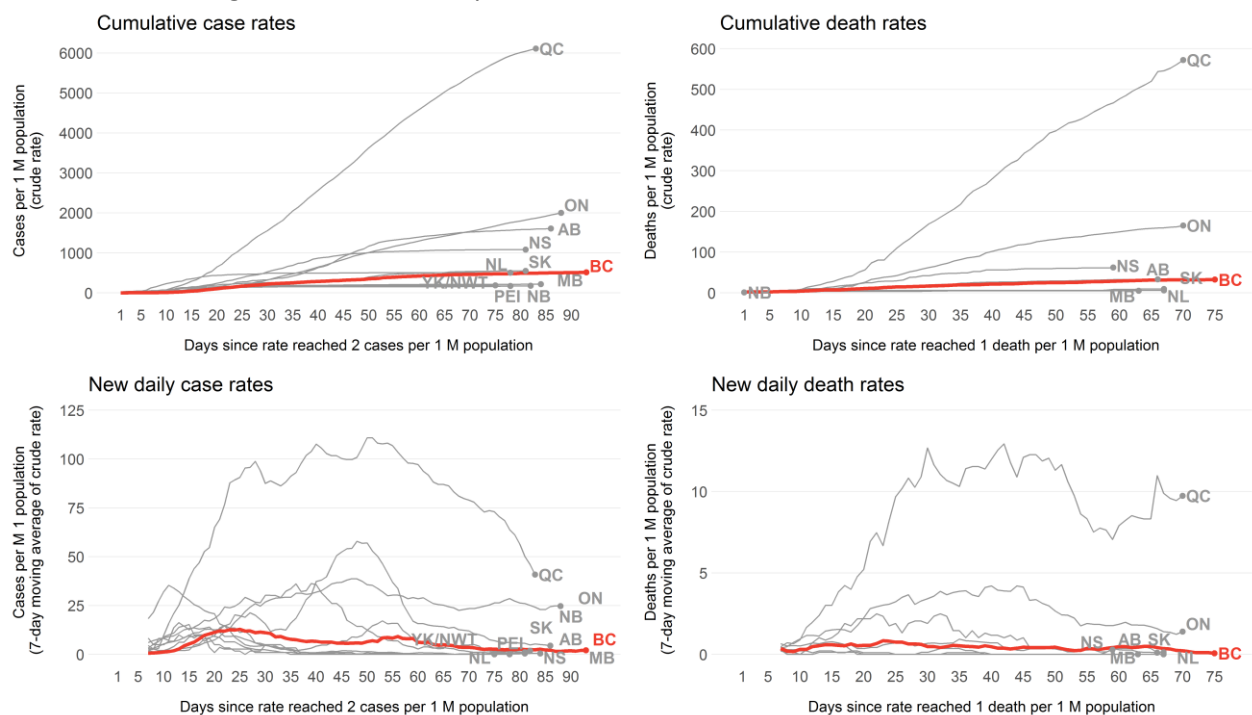
Data available starting March 18. For dates with no data available (April 12 and Sundays from May 10 onwards), the previous day's value was used. Note: Hospitalization data may be incomplete or out of date (i.e., under-estimates) owing to the timing and process for case status update.

### International and National Epidemiological Comparisons

**Figure 12:** Cumulative diagnosed and new daily COVID-19 case and death rates by select countries vs BC and Canada



**Figure 13:** Cumulative diagnosed and new daily COVID-19 case and death rates in Canada



Data sources for international and national epidemiological comparison (all extracted June 4, 2020):  
 JHU CSSE for global cases and deaths, and Canadian provincial deaths outside of BC s: <https://github.com/CSSEGISandData/COVID-19>  
 JHU CSSE for For Canadian provincial cases: Provincial data sources  
 BC cases and deaths: BCCDC  
 Global population denominator from the United Nations  
 Version: June 5, 2020